

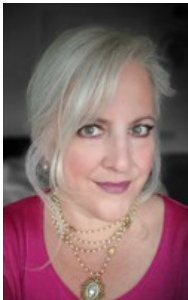


\$ 395,900



754 Columbus Avenue, Phillipsburg, PA 08865

- » Beds: 3 | Baths: 2 Full
- » MLS #: 3953430
- » Single Family
- » More Info: 754Columbus.IsForSale.com



Autumn Bragg
REALTOR

(484) 241-0638 (Direct:)
(610) 250-8880 (Office:)
marketing@homespotmedia.com



COLDWELL BANKER
HERITAGE
REAL ESTATE

Coldwell Banker Heritage
2426 Emrick Blvd.
Bethlehem, PA 18020
(610) 250-8880

Remarks

Beautiful Pursel Hill single home with custom & updated features including new kitchen with quartz countertops & subway tile backsplash, plus a four-season addition. Home sits on a large .25-acre lot with shed, two-car garage, car port & paved parking for additional cars, boat, and/or RV. Great outdoor living space with cement patio & flat backyard. Inside features a new eat-in kitchen w/ new dishwasher, microwave & gas stove. The living room opens up to the dining room providing a relaxing setting drenched in sunlight. Hallway leads to full bath with quartz countertop, and three bedrooms. The lower level of the home is a wonderful retreat! Spacious & detailed 13' x 22' family room w/ gas stove for chilly nights that sits against genuine brick wall detail. The ceiling is styled w/ pattern & beam to add to the cozy atmosphere. The adjacent 17' x 14' four-season addition offers a contrasting feel with bright open space that overlooks the backyard. The room is detailed w/ flagstone slate flooring, ceiling fan & gas heater. Lower-level powder room & laundry area. Stained glass ceiling accent. Gas heat, ceiling fans & window A/Cs. Three-year old roof & water heater. Convenient location near shopping, restaurants, schools & hospital. plus easy access to RT22 and I78.

